



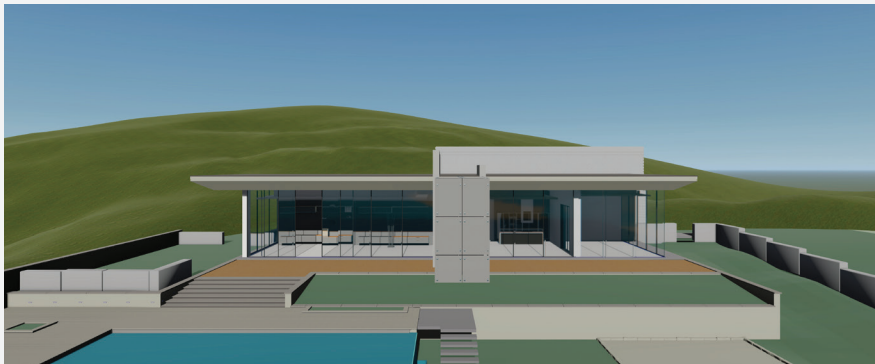
10

ENHANCE
WORKFLOWS.

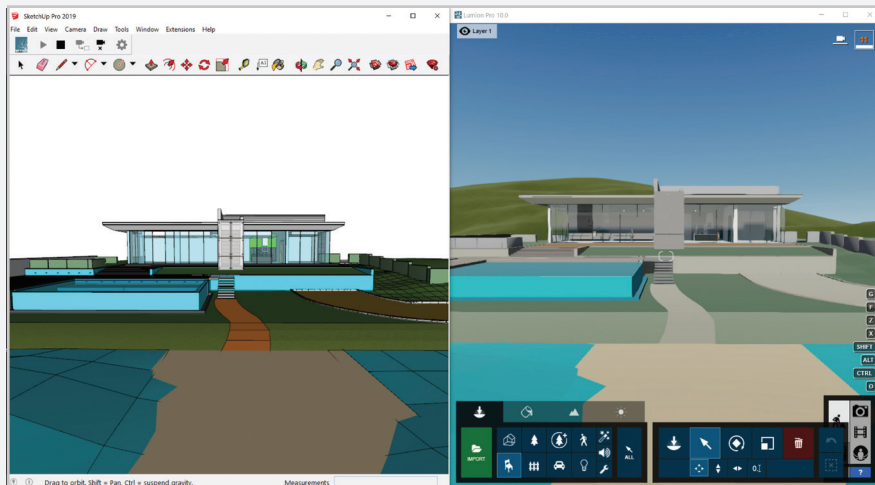


Step 1: Import a 3D model

From the first phases of the design process to the big client presentation, Lumion 3D rendering software sets out to create a productive, stress-free experience for those moments when you need to show your designs in a beautiful, compelling way.



Lumion is compatible with most CAD and 3D modeling programs. Importing only takes a few moments, and if you need to make changes in your modeling software, you can re-import the model and it will immediately update in your live Lumion scene.



With Lumion LiveSync, you can create a live, real-time connection with several popular architectural design programs. When you modify the 3D model's shape, you'll see these changes taking place, in real-time, in Lumion's immersive, detail-rich environments.

**LiveSync is available for Revit, SketchUp, ArchiCAD, Rhino 6 and Vectorworks"*

Step 2: Create a living environment

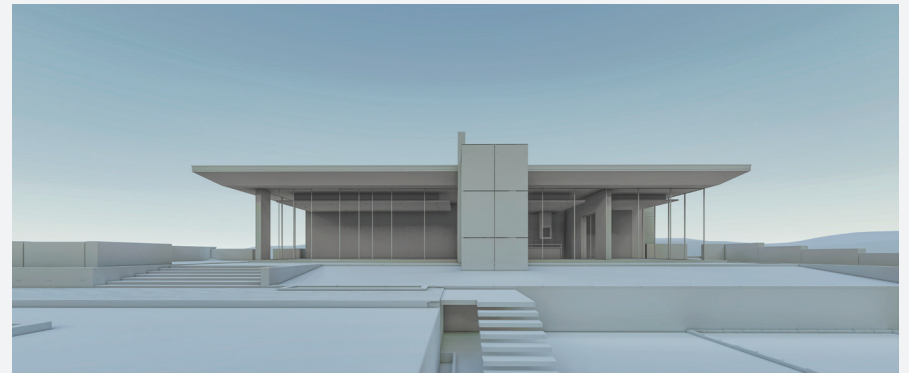


Over 5,600+ objects

The Lumion content library contains over 5,600+ richly detailed objects to help you instantly demonstrate your vision for the context surrounding a residential home, commercial building, landscape design or urban plan.



From residential exteriors to commercial interiors, sweeping landscapes to dense urban scenes, Lumion has everything you need to bring your vision to life.



Over 1,200+ materials

The Lumion materials library has over 1,200+ high-quality, customizable materials, giving you more options for when you need to turn your 3D model into a living, breathing building.

Step 3: Breathe life into your designs



Once you've built the environment around your design, the next step is to bring it to life.

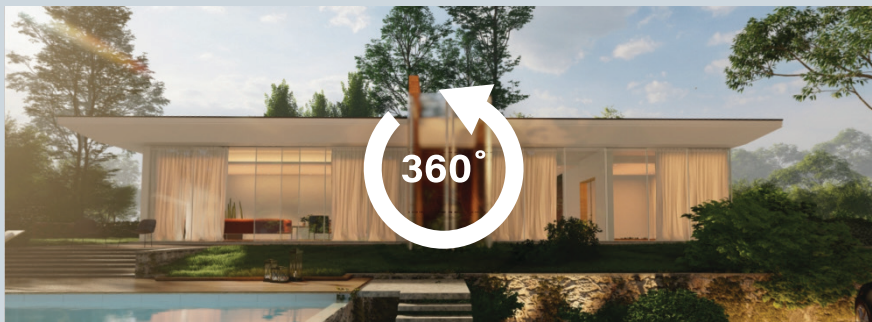
From the photorealistic to the conceptual, Lumion makes it easy to show your design under a mesmerizing sky with accurate environmental lighting.



Make it rain or cover the ground in snow. Animate busy city scenes with moving cars and people. And capture the vision and spirit behind your project.

Faster results

When you're ready to render, Lumion gets you a beautiful, accurate result faster than most other 3D rendering programs available. You can render out images in seconds and, often, you can create videos and large panoramas in less than an hour.

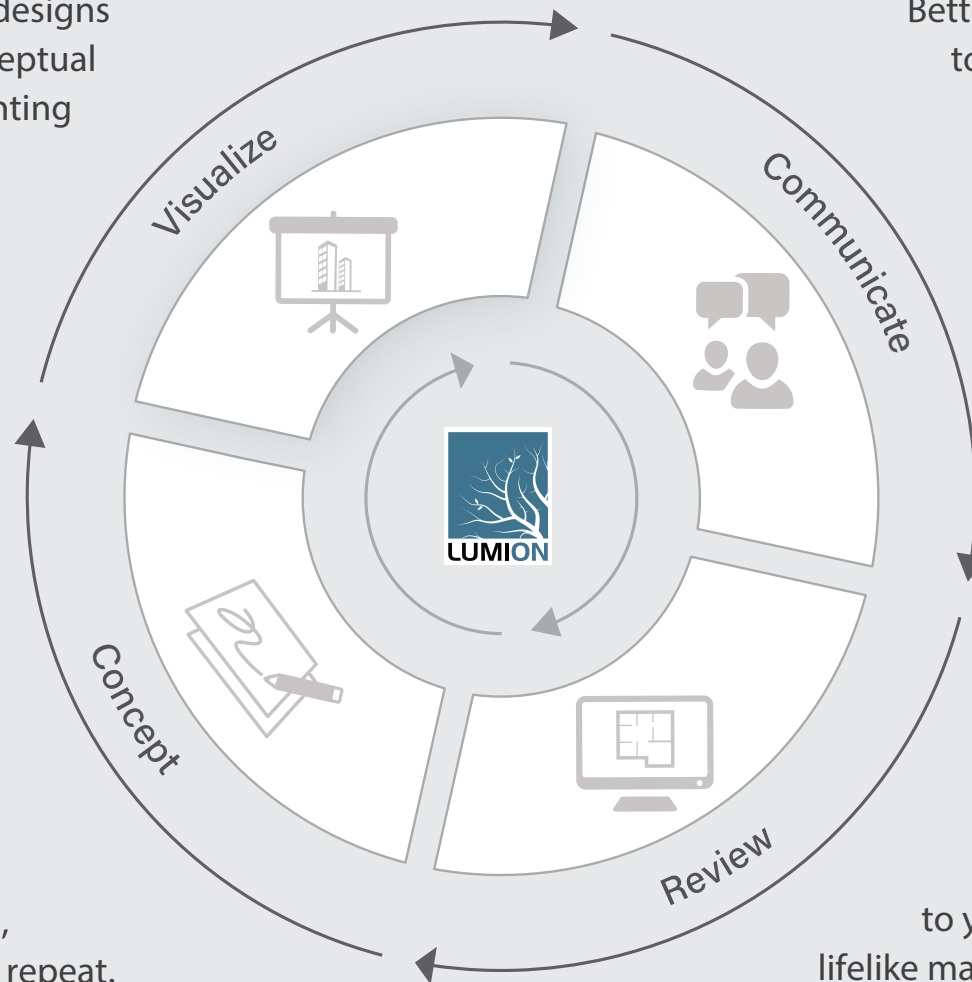


** Model design by Marco Caccini.*

How Lumion adds to architectural workflows

Quickly visualize your 3D designs in a photorealistic or conceptual manner with beautiful lighting and shadows.

Better communicate with others to solve design problems and get the exact feedback you need.



Instantly apply the feedback to improve your design concepts. Visualize, communicate, review and repeat.

Review the changes you've made to your design by seeing it with lifelike materials, context and lighting.



Improve the way you work with Lumion 10.



Lumion 10 builds on the tradition of making 3D rendering a stress-free part of architectural workflows. Simply imagine how you want to show your design and Lumion 10 can help you quickly bring that vision to life. Ten versions of Lumion.

A decade of reliable, intuitive rendering software.

Made especially for you — the architect.

Discover more at [Lumion.com](https://lumion.com).

Lumion is compatible with most major CAD and 3D modeling programs, including Revit, SketchUp, ArchiCAD, 3ds Max, Rhino, Vectorworks, Allplan and AutoCAD, among others.

Lumion LiveSync is compatible with Revit, SketchUp, ArchiCAD, and Vectorworks.